

Class- 6th

Subject- Science

Chapter- 7

Getting to know plants

Exercise Questions

1. Correct the following statements and rewrite them in your notebook.

Solution:

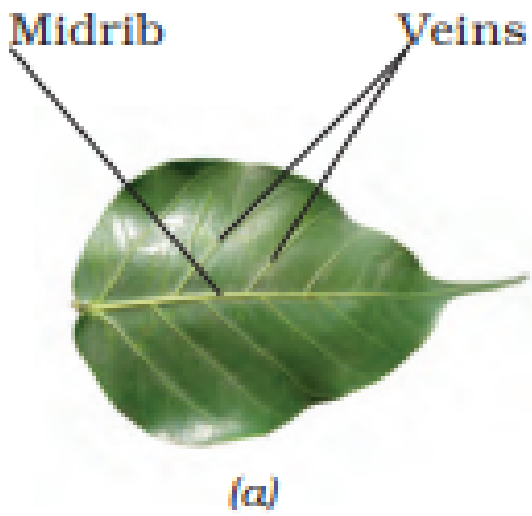
- a) Roots absorbs water and minerals from the soil.
- b) Stem holds the plant upright.
- c) Stems conduct water to the leaves.
- d) The number of petals and stamens in a flower may not be always equal.
- e) If the sepals of a flower are joined together, its petals are separate.
- f) If the petals of a flower are joined together, then the pistil may or may not be joined to the petal.

2. Draw (a) a leaf, (b) a taproot and (c) a flower, you have studied for Table 7.3

Solution:

a)Leaf





b) tap root



c) flower



3. Can you find a plant in your house or in your neighborhood, which has a long but weak stem? Write its name. In which category will you place it?

Ans: Yes, lauki (bottle guard) plant needs support. It is a climber.

4. What is the function of a stem?

Ans: Following are the functions of a stem:-

(i) Stem holds the plant upright.

(ii) Stems conduct water to the leaves.

(iii) Stems conduct food from leaves to other parts of the plant.

5. Which of the following leaves have reticulate venation?

Ans: Tulsi, China rose and coriander have reticulate venation.

6. If a plant has fibrous root, what type of venation do its leaves have?

Ans: If a plant has fibrous root, its leaves have parallel venation.

7. If a plant has leaves with reticulate venation, what kind of roots will it have?

Ans: If a plant has leaves with reticulate venation, it will have tap root.

8. Is it possible for you to find out whether a plant has taproot or fibrous roots by looking at the impression of its leaf on a sheet of paper?

Ans: Yes it is possible to find whether a plant has taproot or fibrous roots by looking at the impression of its leaf on a sheet of paper.

9. What are the parts of a flower?

Ans: a) Sepals

b) Petals

c) Stigma

d) Style

e) Anther

f) Androecium

g) Gynoecium

10. From the following plants, which of them have flowers?

Ans: Chilli, Tomato, Tulsi, Mango, pomegranate, Lemon, Jamun, Guava, papaya, banana

11. Name the part of plant which produces food. Name the process.

Ans: Leaves produce food through a process called as Photosynthesis.

12. In which part of a flower, you will find the ovary?

Ans: Ovary is found in lowermost and swollen parts of the pistil.

13. Name two plants in which one has joined sepals and the other has separate sepals.



Ans:(a) Plants with joined sepals- Rose, Lotus

(b) Plants with separate sepals- China rose, Mustard flower.

Additional Questions:-

Q.1 With the help of diagrams, differentiate between a shrub and a tree, based on the properties of the stem.

Ans:

Shrub	Tree
More branches arise from the base of stem. The stem is hard and thin.	The branches arise from the stem. The stem is hard, thick and woody.
 <p data-bbox="354 1560 604 1591">Fig. 7.15. Shrub</p>	 <p data-bbox="922 1581 1117 1612">Fig. 7.16. Tree</p>

Q.2 What are climbers and creepers? Give some examples.

Ans:(i) Climbers:- Climbers are weak stemmed plants that take support from climbing up trees and other tall objects. Examples are pea plant, money plant, etc.

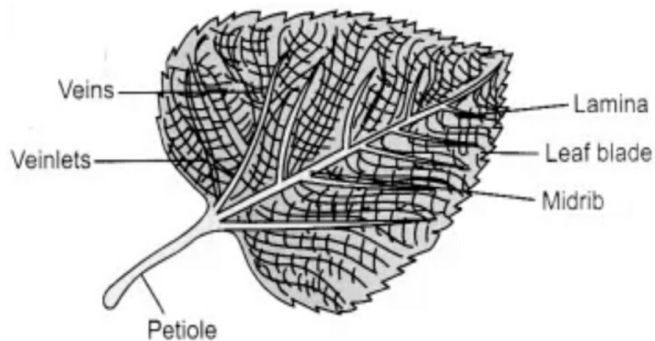
(ii) Creepers:- Creepers also have weak stem that usually grow horizontally along the ground, around another plant, or wall. Examples are watermelon, pumpkin etc.

Q.3 Define petiole and lamina.

Ans: The part of leaf attached to the stem is called petiole and the broad green part of the leaf is called lamina.

Q.4 Draw a labelled diagram of the external structure of a leaf.

Ans:



Q.5 What are the two main functions of leaf?

Ans: (a) Photosynthesis:- The process by which leaves prepare their own food with help of carbon dioxide, water, sunlight and chlorophyll is called photosynthesis.

(b) Transpiration:- The extra water comes out of leaf throat stomata in the form of water vapour. This process is called transpiration.

